

Driver card for 32mm diameter Motorized pulley



# CB-018N2

[Applicable MDR models]

PM320HS

### Standard Accessories

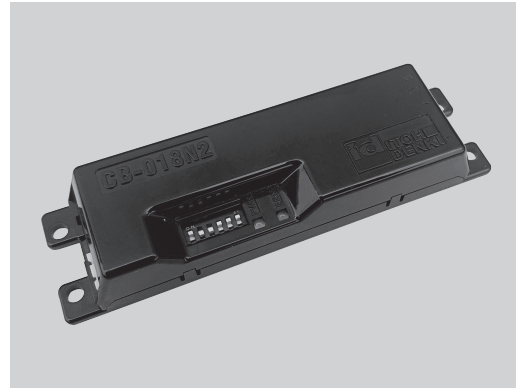
- Power connector(CN 1) \_\_\_\_\_ 1pce
- Control connector(CN 2) \_\_\_\_\_ 1pce
- Mounting screws and nuts
- Cross recessed pan head screw M4×10 \_\_\_\_\_ 4pcs
- Nut M4 \_\_\_\_\_ 2pcs

#### ■ Compact design

W124 x H34 (mm)

#### ■ Speed can be set in 8 steps

Digital setting method makes each speed adjustment for each Power Moller.



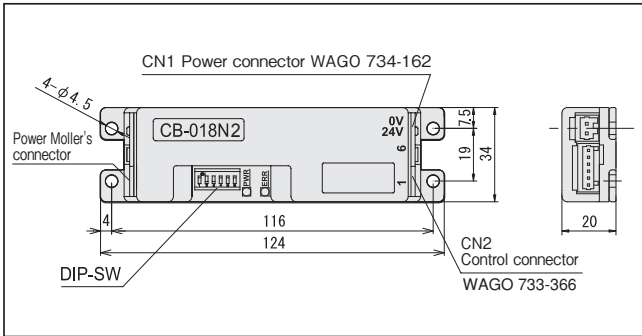
#### ■ Easy setting

- Easy to set speed variation and acceleration.
- Stability speed function is equipped as a standard.

#### ■ Error types can be checked

Thermal error, lock error, low voltage error, overloaded error, disconnected error and blown fuse error can be checked.

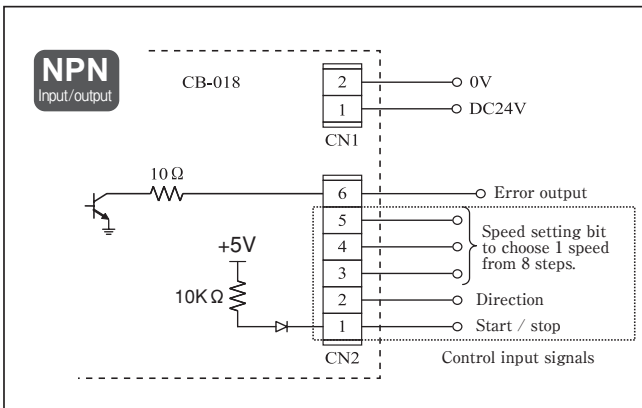
### [Dimensions]



### ● Dip switches

SW1	Acceleration / deceleration	Invalidated with OFF
		Validated with ON (for 1 second with default setting)
SW2	Speed setting	Internal speed setting with OFF
		External speed setting with ON
SW3	Direction	Switching of CW and CCW (default OFF setting)
SW4 { SW6	Speed variation (When SW2 OFF)	8 different speeds by the combination of 3 signals

### [Wiring diagram]



### [Specifications]

Enclosure	Fire resistant polycarbonate ULV0 black
Power voltage	24V DC±10%
Rated voltage	24V DC
Static current	0.04A
Peak current	5.0A
Starting current	2.2A
Oscillation frequency	4.0MHz
PWM frequency	16kHz
Delay time	≤1 second (initial reset)
Motor activation time	≤150msec
Error signal output	NPN open collector output (used with 35VDC ≤ 25mA)
LED indication	Red - Error Green - Powered
Brake	Dynamic brake (≤10msec brake activation time)
Thermal protection	75°C inside Driver card
Power connector	WAGO 734-102(EAHB 05)
Control connector	WAGO 733-106(PACB 18)

#### <Environment>

Ambient temperature	0 to 40°C (no freezing)
Relative humidity	≤ 90RH (no condensation)
Atmosphere	No corrosive gas
Vibration	≤ 0.5G