



Minimum tube length



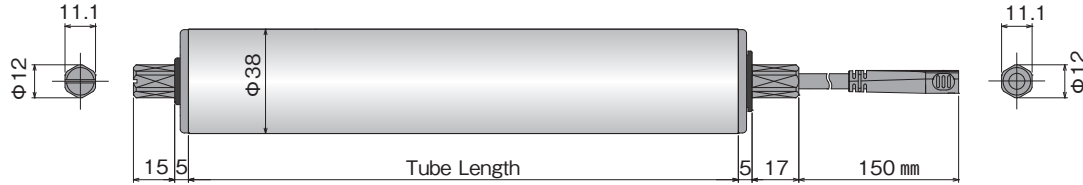
Spring loaded shaft

MDR Brushless DC Motor standard type PM380VS

Roller diameter $\varnothing 38$

Roller diameter $\varnothing 38$ PM380VS

- Roller diameter / $\varnothing 38$
- Thickness / t1.2
- Voltage / 24V DC
- Tube material / STKM12
- Surface treatment / Trivalent chromate processing



Tube Length : PM380VS

PM380VS-17



200mm



≥ 215 mm

Tube Length (mm)	200	300	400	500	600
Weight (kg)	1.0	1.1	1.2	1.3	1.4
Spring loaded shaft	×	○	○	○	○

PM380VS-60



200mm

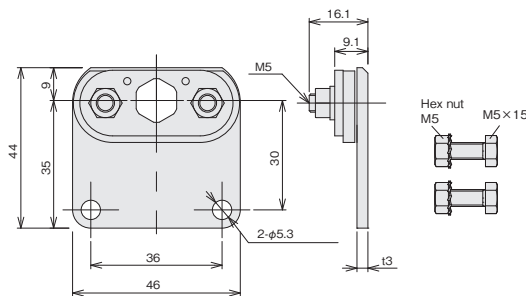


≥ 200 mm

Tube Length (mm)	200	300	400	500	600
Weight (kg)	1.0	1.1	1.2	1.3	1.4
Spring loaded shaft	○	○	○	○	○

- Conveyor frame inside dimension and frame hole shape vary by the manufacturer.
- A gap of 2~5mm is required between the frame inside dimension and Power Moller. (Fix the product in the frame making the gap both ends even.)

Mounting Bracket : No.C-081



- Attach to the power cable side.
- Apply 3.0Nm for securing the Power Moller shaft, and 3.5Nm for securing the bracket.

Product Designation :

PM380VS - 60 - 200 - D - 024 - **VP**

Power Moller model Nominal Speed Tube Length Voltage Options

- Motor type : VS
- Nominal Speed : 17,60
- Tube Length : Specify in mm.
- Voltage : D-024 (24VDC)
- Options : Each of the following optional specification may be selected.

Options : PM380VS



Rubber Laggings - NR, UR, NB, CR

Natural rubber, Urethane, NBR, Neoprene



DR

Drip Proof

200mm

≥ 200 mm

≥ 215 mm for nominal speed 17



WA

Water Proof

200mm

≥ 215 mm

215mm for nominal speed 17 ≥ 230 mm for nominal speed 17



VG

Poly V-Belt Pulley

200mm

≥ 200 mm

215mm for nominal speed 17 ≥ 215 mm for nominal speed 17



VP


V-Belt Pulley

200mm

≥ 200 mm

215mm for nominal speed 17 ≥ 215 mm for nominal speed 17

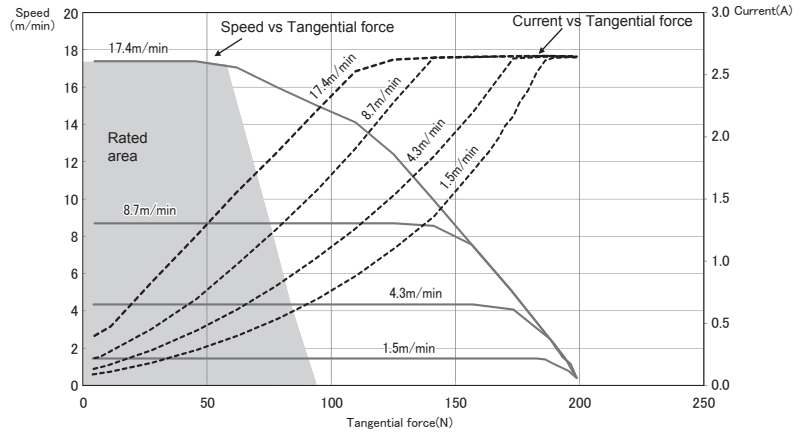
- * Standard bracket for dripproof or waterproof is No.C-081-D (Stainless type).
- * For tube length or other specification availability, contact our sales support.

 [MDR Selection Tool] is available on our web page.

Operating characteristics with CBV30 driver card

PM380VS-17

Speed (m/min)		Tangential Force (N)		Current (A)		Power Output (W)	Power Input (W)	RSW
No-load	Rated	Starting	No-load	Starting	No-load			
17.4	59	198	0.4	2.6	24	37	9	
14.5	64		0.3		21	35	8	
11.6	69		0.2		17	30	7	
8.7	75		0.2		16	30	6	
7.2	78		0.2		13	27	5	
5.8	81		0.1		10	24	4	
4.3	84		0.1		9	24	3	
2.9	87		0.1		6	21	2	
2.3	88		0.1		5	19	1	
1.5	90		0.1		3	17	0	



PM380VS-60

Speed (m/min)		Tangential Force (N)		Current (A)		Power Output (W)	Power Input (W)	RSW
No-load	Rated	Starting	No-load	Starting	No-load			
60.0	19	64	0.4	2.6	24	37	9	
50.0	21		0.3		21	35	8	
40.0	22		0.2		17	30	7	
30.0	24		0.2		16	30	6	
25.0	25		0.2		13	27	5	
20.0	26		0.1		10	24	4	
15.0	27		0.1		9	24	3	
10.0	28		0.1		6	21	2	
8.0	29		0.1		5	19	1	
5.0	29		0.1		3	17	0	

