



Minimum tube length



Spring loaded shaft

MDR Brushless DC Motorized pulley PM320HS Roller diameter $\varnothing 32$

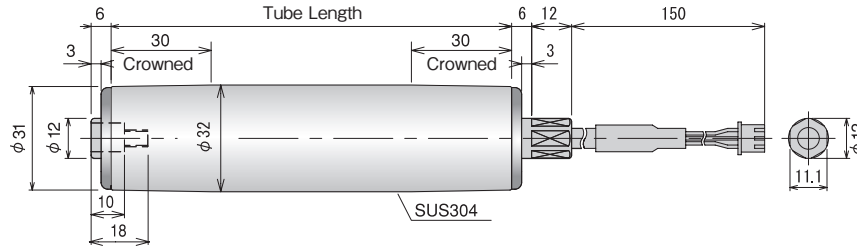
Roller diameter $\varnothing 32$

10W

PM320HS

- Roller diameter / $\varnothing 32$
- Thickness / t2.0
- Voltage / 24V DC
- Tube material / SUS304

Insulation	Class E equivalent
Operation	Continuous duty
Thermal Protection	Protection
Protection	IP 65



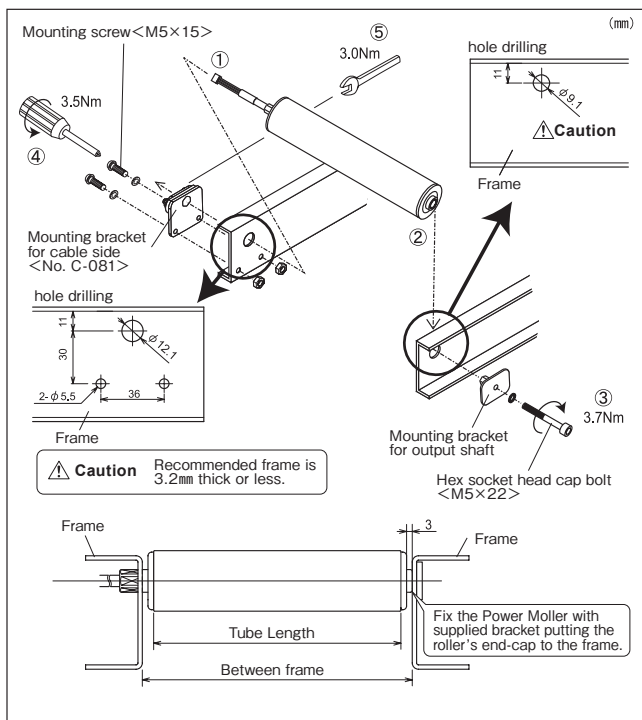
Tube Length : PM320HS



Minimum tube length 170mm

Tube Length (mm)	170	220	270	320	370	420	470
Weight (kg)	0.7	0.9	1.0	1.0	1.1	1.2	1.3

- Spring loaded shaft is not available for this component.
- Dimensions other than those shown above cannot be produced.
- Conveyor frame inside dimension and frame hole shape vary by the manufacturer.
- A gap of 6mm is required between the frame inside dimension and Power Moller.



Product Designation :

PM320HS - 30 - 220 - D - 024 - PC

Power Moller model Nominal Speed Tube Length Voltage Crowned

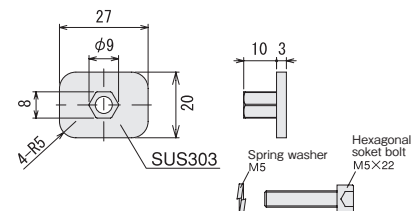
- Motor type : HS
- Nominal Speed : 30
- Tube Length : 170, 220, 270, 320, 370, 420, 470
- Voltage : D-024 (24VDC)

Operating Characteristics : CB-018

Default

Nominal Speed (m/min)	Speed (m/min)		Tangential Force(N)		Current (A)		Driver setting			
	No load	Nominal	Nominal	Starting	No load	Nominal	Starting	SW4	SW5	SW6
				37.2			2.2	CN2-3	CN2-4	CN2-5
30	28.0	25.8	24.4			0.32		0.90		ON
25	24.7	24.7	24.5		0.26	0.89		ON	ON	OFF
22	22.0	22.0	24.9		0.21	0.83		ON	OFF	ON
19	18.8	18.8	25.3		0.20	0.74		ON	OFF	OFF
16	15.9	15.9	25.8		0.16	0.67		OFF	ON	ON
13	13.0	13.0	26.2		0.13	0.61		OFF	ON	OFF
10	9.9	9.9	26.6		0.10	0.53		OFF	OFF	ON
6	5.8	5.8	27.2		0.06	0.44		OFF	OFF	OFF

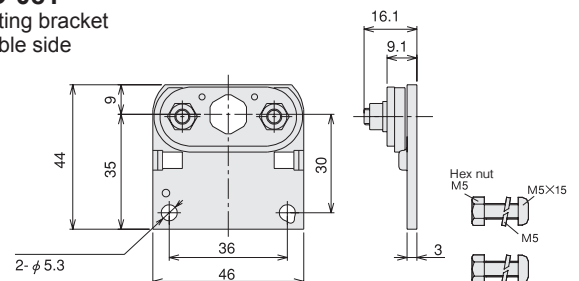
Mounting bracket for output shaft



- Apply 3.7N·m torque for securing the power Moller mounting.

No.C-081

Mounting bracket for cable side



- Apply 3Nm torque for securing the Power Moller mounting shaft, and 3.5Nm for securing the bracket.
- In the case of water-proof environment, order No. C-081-D.

[When Using in a Water-proof Environment]

Specify the following at the time of ordering.

- ① power cable extension → 1000mm [Model: C100]
- ② Change of the included bracket → No. C-081-D (SUS material) included

ex. **PM320HS - 30 - 220 - D - 024 - C100 - PC**
No.C - 081 - D