

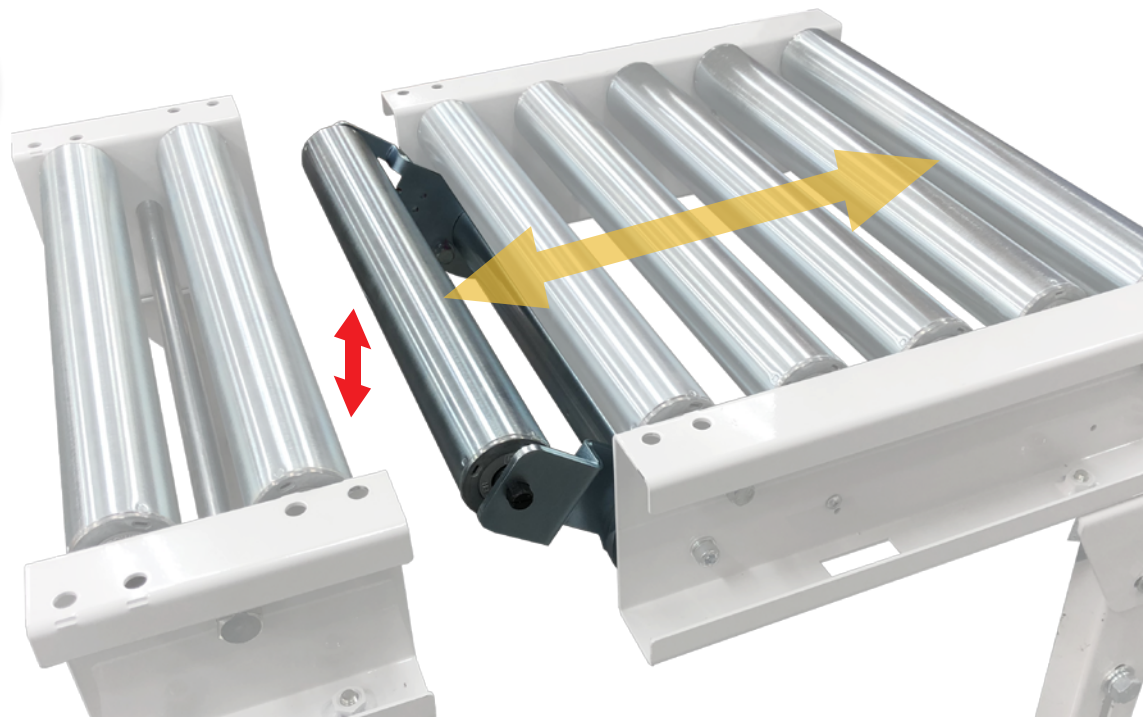


Conveyor bridge roller ensuring fire shutter path. GPR

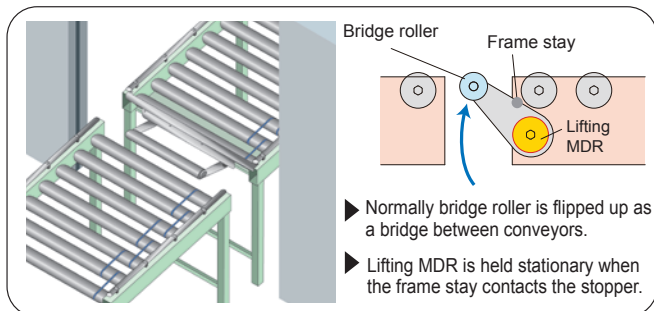
GPR roller being powered flips up to function as bridge roller between conveyors, and falls by gravity creating a fire shutter path in the event of emergency.

No Pneumatic

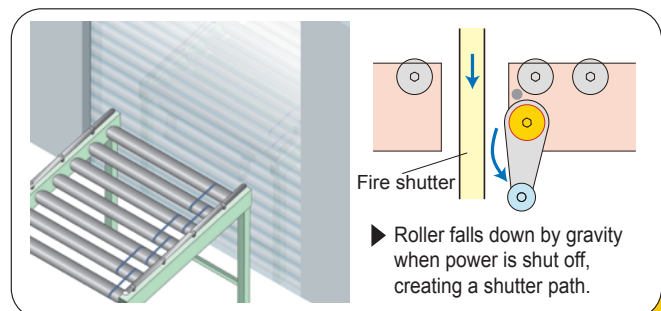
Driven by MDR (24VDC)
using no pneumatic



Normal



Emergency

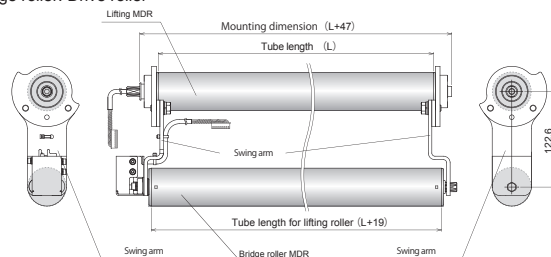


Model Number and Dimensions

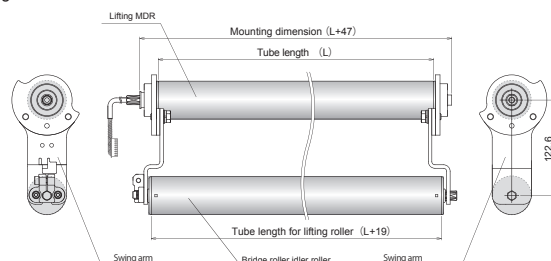
Model Number : GPR - ① - ② ③ ④

- (1) Between frame width
400mm ~ 900mm
- (2) Nominal speed for drive roller (PM486FE)
17 ... 17m/min type
60 ... 60m/min type
90 ... 90m/min type
- (3) Bridge roller
FE ... PM486FE MDR type (Driving roller)
AR ... ARI-48 Idler roller type
- (4) Input/output signal type
N ... NPN I/O signal
P ... PNP I/O signal

Bridge roller: Drive roller

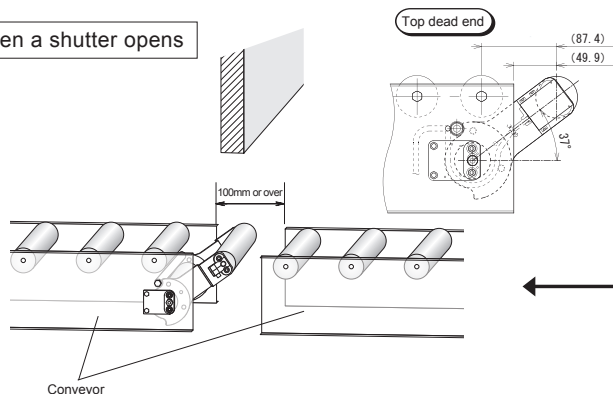


Bridge roller: Idler roller



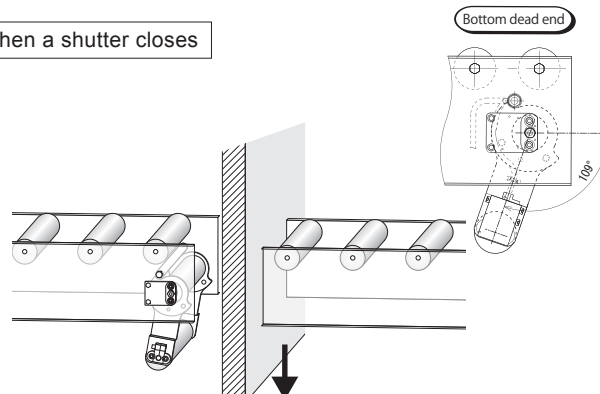
Operation

When a shutter opens



When the shutter opens, the bridge roller flips up to function as bridge between conveyors.

When a shutter closes



When the shutter closes, the roller falls by gravity, creating a shutter path.

* Conveyor is not included in this product (GPR).

Specifications

Product to handle

Maximum weight	30kg ^{*1)}
Material	Plastic tray, Cardboard, etc. ^{*2)}
Dimensions	250mm long or over

*1) The maximum load weight varies depending on the transferred products' material, their bottom shape, their size, and throughput.

*2) Thermal error would frequently occur by excessive load applies on MDR caused by large ribs or deformed shape of the bottom of transferred box.

Speed

Transfer speed	Lifting MDR	8 m/min
	Bridge roller: MDR	17, 60, or 90m/min

Installation environment

Ambient temperature	0 to 40°C (no freezing)
Ambient humidity	90%RH or less (no condensation)
Altitude	1,000m or less
Atmosphere	No corrosive gas
Vibration	0.5G or less
Installation location	Indoor
Mounting surface tilt (inclination)	0.5% or less
Degree of contamination	2 (according to the definition of IEC60640-1, UL840)

Power supply

Voltage specifications		24V DC±10%
Rated current	Bridge roller: MDR	4.9A (Lifting MDR 2.2A + Bridge MDR 2.7A)
	Bridge roller: Idler roller	2.2A (Lifting MDR 2.2A)

Driver card specifications

Model	CB-016-6-MJ2/CB-016-6(≡N:NPN, P:PNP)	
Power supply voltage	24V DC±10%	
Rated voltage	24V DC	
Static current	0.03A	
Starting current	4.0A	
Peak current	20A (1ms or less)	
Wire diameter	Power connector (CN1)	0.50 ~ 1.5mm ² (Note) (AWG : 20 ~ 14)
	Control connector (CN2)	0.08 ~ 0.5mm ² (Note) (AWG : 28 ~ 20)
Time from RUN signal input to motor starting	15msec or less	
Protective function	Incorrect wiring protection Built-in 6.3A fuse	
Thermal protection	Driver card 95°C Motor 105°C	
Current limitation	4.0A	
Operating environment	Ambient temperature	0 to 40°C (no freezing)
	Ambient humidity	90%RH or less (no condensation)
	Atmosphere	No corrosive gas
	Vibration	0.5G or less
Installation location	Indoor	

Note) Applicable wires to connectors included as standard



<http://www.itohdenki.co.jp/>

Headquarters

■ Itoh Denki Co., Ltd.

1146-4 Asazuma-cho, Kasai, Hyogo 679-0105 Japan
Tel: +81 790 47 0955 Fax: +81 790 47 1325

Europe, Middle East & Africa

■ Itoh Denki Europe SAS

490, avenue des Jourdiés, ZAE des Jourdiés BP 323,
74807 St Pierre en Faucigny CEDEX, France
Tel: +33 4 50 03 09 99 Fax: +33 4 50 03 07 60
Tel: +44 19 24 36 65 39 Fax: +33 4 50 03 07 60
Tel: +49 911 25 26 200 Fax: +49 911 25 26 201

■ UK office
■ Germany office

North & South America

■ Itoh Denki U.S.A., INC.

2 Great Valley Blvd, Wilkes-Barre PA18706-5332 U.S.A.
Tel: +1 570 820 8811 Fax: +1 570 820 8838

Asia

■ Itoh Denki Asia Limited

Unit F 22nd floor, No.8 Hart Avenue, Tsim Sha Tsui
Kowloon, Hong Kong
Tel: +852 2427 2576 Fax: +852 2427 2203

China

■ Itoh Denki Shanghai Co., Ltd

No.689, room 1812, No.689 Guangdong Rd, Shanghai
P.R.200001, China
Tel: +86 21 6341 0181 Fax: +86 21 6341 0180